

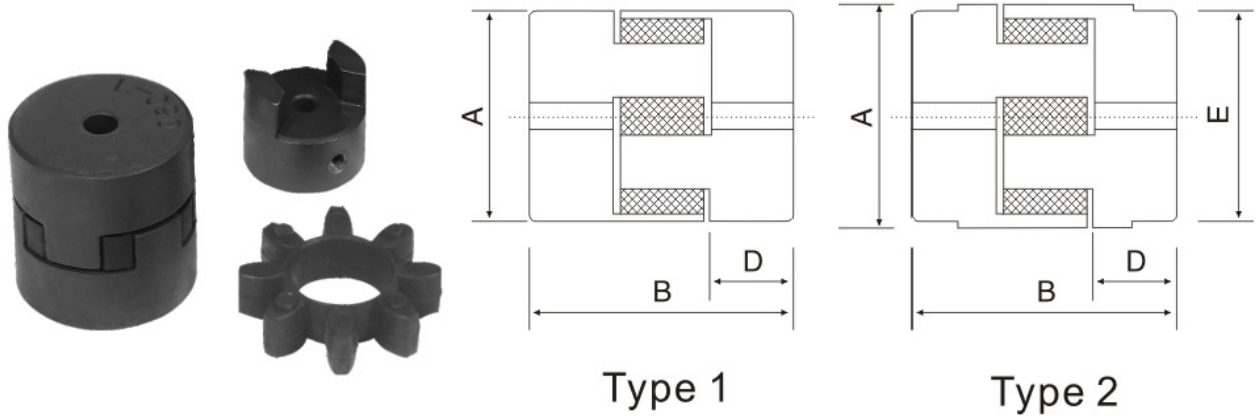


МУФТЫ СОЕДИНИТЕЛЬНЫЕ ДЛЯ ВАЛОВ





МУФТЫ КУДАЧКОВЫЕ JAW С УПРУГИМ ЭЛЕМЕНТОМ

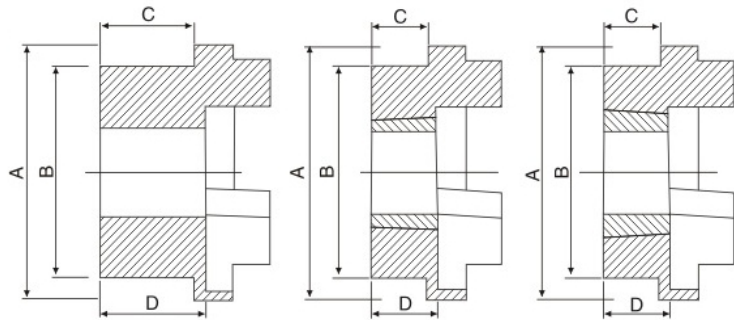


JAW COUPLING

SIZE	TYPE	A	B	D	E	Std bore	Bore metric		Bore inch	
							Min	Max	Min	Max
L035	1	16	20.5	6.6	—	3	3	8	1/8"	3/8"
L050	1	28	43.2	15.6	—	6	6	15	3/16"	5/8"
L070	1	35	50.8	19.0	—	9	9	19	3/16"	3/4"
L075	1	45	54.7	21	—	9	9	25	3/16"	1"
L090	1	54	54.7	21	—	9	9	28	3/16"	1 1/8"
L095	1	54	63.7	25.5	—	9	9	28	3/8"	1 1/8"
L099	1	64.5	72.5	27	—	12	12	35	7/16"	1 3/8"
L100	1	64.5	88.5	35	—	12	12	35	7/16"	1 3/8"
L110	1	85	108	43	—	15	15	48	1/2"	1 7/8"
L150	1	96	115.4	45	—	15	15	48	5/8"	1 7/8"
L190	2	115	133.4	54	101.6	19	19	55	5/8"	2 1/4"
L225	2	127	153.4	64	108	19	19	65	3/1"	1 5/8"



МУФТЫ КУЛАЧКОВЫЕ НРС С УПРУГИМ ЭЛЕМЕНТОМ



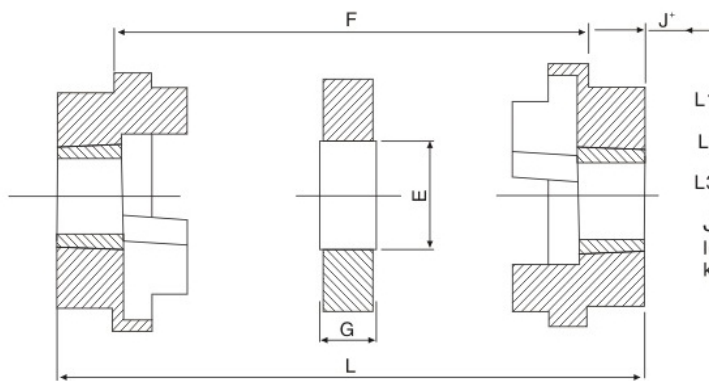
BFLANGE

FFLANGE

HFLANGE

HRC COUPLING

SIZE	BUSH	Type F&H		Bored to size						A	B	E	F	G	L ₁	L ₂	L ₃	J ₄
		Bore		C	D	Bore		C	D									
		MAX	MIN			MAX	MIN											
70	1008	25	9	20.0	23.5	32	10	20	23.5	69	60	31	25	18	65	66.5	68	29
90	1108	28	9	19.5	23.5	42	10	26	30.5	85	70	32	30.5	22.5	69.5	76	82.5	29
110	1610	42	14	18.5	26.5	55	10	37	45.5	112	100	45	45	29	82	101	119	38
130	1610	42	14	18.5	26.5	60	20	39	47.5	130	105	50	53	35	89	118	146	38
150	2012	50	14	23.5	33.5	65	28	46	56.0	150	115	62	60	40	107	134	160	42
180	2517	60	16	34.5	46.5	80	28	58	70.0	180	125	77	73	49	142	165	189	48
230	3020	75	25	39.5	52.5	100	48	77	90.0	225	155	99	85.5	59.5	165	202	240	55
280	3525	100	35	51.0	66.5	115	60	90	105.5	175	206	119	105.5	74.5	208	247	286	67



Assembled length

L₁ is the length with assembly combinations F.F-H.H-F.H

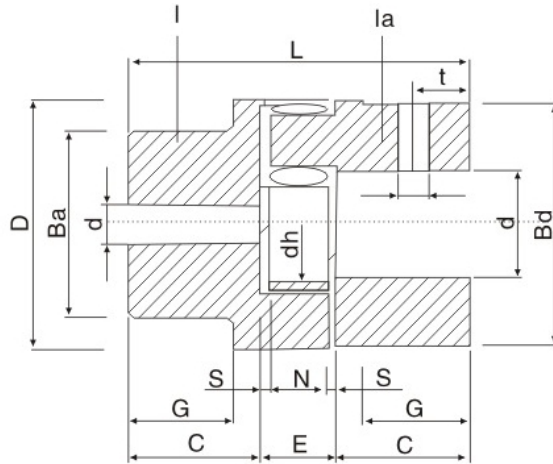
L₂ is the length with assembly combinations F.B-H.B

L₃ is the length with assembly combinations B.B

J⁺ is the wrench clearance required for tightening and loosening the bush on the shaft. The use of a short-necked key will allow this dimension to be reduced



МУФТЫ УПРУГИЕ КУЛАЧКОВЫЕ GE

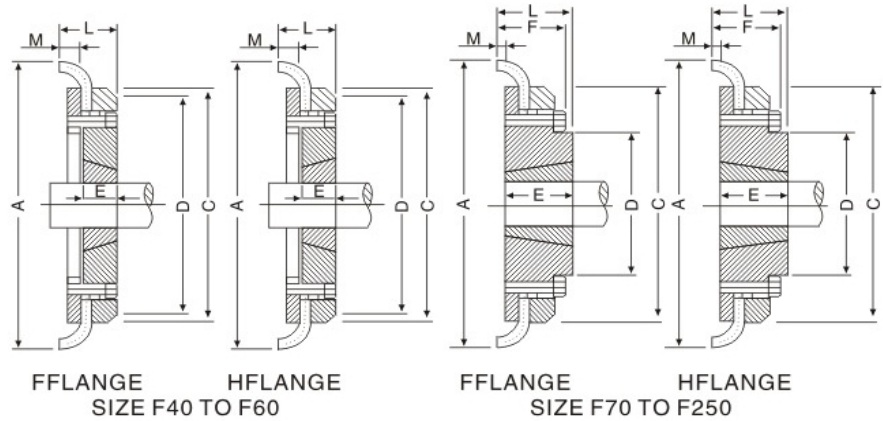


GE COUPLINGS

SIZE	Component	Splder(part2)rated rorqe(NM)			Std bore	Finish bore	L	C	E	N	S	D	dh	ba: bd	G	Finish bore	
		92 Sh A	98 Sh A	64 Sh D	(D)	(D)min-max										H	t
19/24	1	10	17	21	6	6-16	66	25	16	12	2	40	18	32	20	M5	10
	6				6-24	40								-			
24/32	1	35	60	75	9	9-24	78	30	18	14	2	55	27	40	24	M5	10
	9				9-32	55								-			
28/38	1	95	160	200	10	10-28	90	35	20	15	2.5	65	30	48	28	M8	15
	10				10-38	65								-			
38/45	1	190	325	405	12	12-38	114	45	24	18	3	80	38	66	37	M8	15
	12				12-45	78								-			
42/55	1	265	450	560	12	12-42	126	50	26	20	3	95	46	75	40	M8	20
	12				12-55	94								-			
48/60	1	310	525	655	12	12-46	140	56	28	21	3.5	105	51	85	45	M8	20
	12				12-60	104								-			
55/70	1	410	685	825	15	15-55	160	65	30	22	4	120	60	98	52	M10	20
	15				15-70	118								-			
65/75	1	625	940	1175	15	15-65	185	75	35	26	4.5	135	68	115	61	M10	20
	15				15-75	133								-			
75/90	1	1280	1920	2400	15	15-95	210	85	40	30	5	160	80	135	69	M10	25
	15				15-90	158								-			
90/100	1	2400	3600	4500	38	38-90	245	100	45	34	5.5	200	100	160	81	M12	25
	38				38-100	180								-			



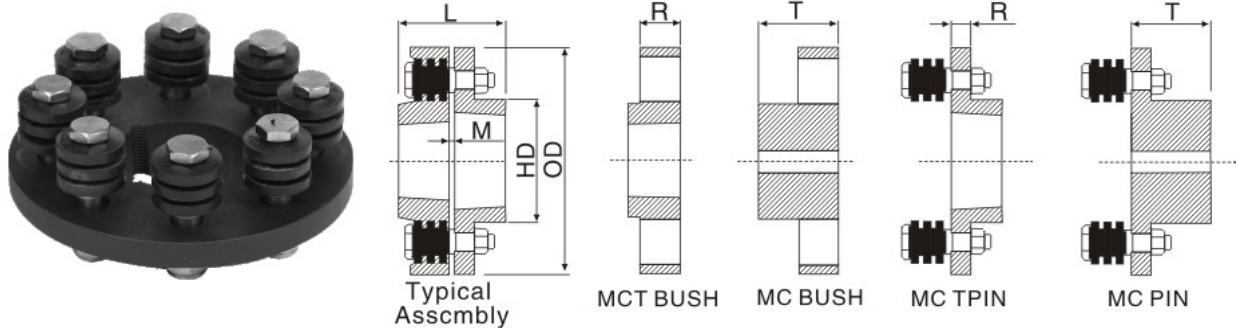
МУФТЫ ТОРООБРАЗНЫЕ ЭЛАСТИЧНЫЕ FENAFLEX



TYRE COUPLING

Size	Type	Bush No.	MAX. Bore		Type F&H		Type H		Serve over Key	A	C	D	F	M
			mm	Inch	L	E	L	E						
F40	B	—	32	—	—	—	33	22	M5	104	82	—	—	11
F40	F	1008	25	1"	33	22	—	—	—	104	82	—	—	11
F40	H	1008	25	1"	33	22	—	—	—	104	82	—	—	11
F50	B	—	38	—	—	—	43	32	M5	133	100	79	—	12.5
F50	F	1210	32	1 1/4"	38	25	—	—	—	133	100	79	—	12.5
F50	H	1210	32	1 1/4"	38	25	—	—	—	133	100	79	—	12.5
F60	B	—	45	—	—	—	55	33	M6	165	125	70	—	16.5
F60	F	1610	42	1 5/8"	42	25	—	—	—	165	125	103	—	16.5
F60	H	1610	42	1 5/8"	42	25	—	—	—	165	125	103	—	16.5
F70	B	—	50	—	—	—	47	35	M8	187	142	80	50	11.5
F70	F	2012	50	2"	44	32	—	—	—	187	142	80	50	11.5
F70	H	1610	42	1 5/8"	42	25	—	—	—	187	142	80	50	11.5
F80	B	—	60	—	—	—	55	42	M8	211	165	98	54	12.5
F80	F	2517	60	2 1/2"	58	45	—	—	—	211	165	98	54	12.5
F80	H	2012	50	2"	45	32	—	—	—	211	165	98	54	12.5
F90	H	—	70	—	—	—	63.5	49	M10	235	188	108	60	13.5
F90	F	2517	60	2 1/2"	58.5	45	—	—	—	235	188	108	60	13.5
F90	H	2517	60	2 1/2"	58.5	45	—	—	—	235	188	108	60	13.5
F100	H	—	80	—	—	—	70.5	56	M10	254	216	120	62	13.5
F100	F	3020	75	3"	64.5	51	—	—	—	254	216	125	62	13.5
F100	H	2517	60	2 1/2"	58.5	45	—	—	—	254	216	113	62	13.5
F110	B	—	90	—	—	—	75.5	63	M12	279	233	128	62	12.5
F110	F	3020	75	3"	63.5	51	—	—	—	279	233	134	62	12.5
F110	H	3020	75	3"	63.5	51	—	—	—	279	233	134	62	12.5
F120	B	—	100	—	—	—	84.5	70	M12	314	264	140	67	14.5
F120	F	3525	100	4"	79.5	65	—	—	—	314	264	144	67	14.5
F120	H	3020	75	4"	85.5	51	—	—	—	314	264	144	67	14.5
F140	B	—	130	—	—	—	110.5	94	M16	359	311	178	73	16
F140	F	3525	100	4"	81.5	65	—	—	—	359	311	178	73	16
F140	H	3525	100	4"	81.5	65	—	—	—	359	311	178	73	16
F160	B	—	140	—	—	—	117	102	M20	402	345	187	78	15
F160	F	4030	115	4 1/2"	92	77	—	—	—	402	345	197	78	15
F160	H	4030	115	4 1/2"	92	77	—	—	—	402	345	197	78	15
F180	B	—	150	—	—	—	137	114	M16	470	394	205	94	23
F180	F	4535	125	5"	112	89	—	—	—	470	394	205	94	23
F180	H	4535	125	5"	112	89	—	—	—	470	394	205	94	23
F200	B	—	150	—	—	—	138	114	M20	508	429	205	103	24
F200	F	4535	125	5"	113	89	—	—	—	508	429	205	103	24
F200	H	4535	125	5"	113	89	—	—	—	508	429	205	103	24
F220	B	—	160	—	□	□	154.5	127	M20	562	474	223	118	27.5
F220	F	5010	125	5"	129.5	102	□	□	□	562	474	223	118	27.5
F220	H	5010	125	5"	129.5	102	□	□	□	562	474	223	118	27.5
F250	H	—	190	—	c	—	161.5	132	M20	628	522	254	125	29.5

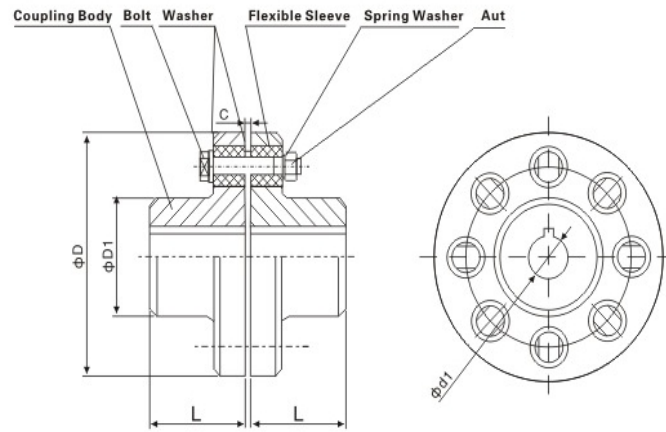
МУФТЫ УПРУГИЕ ВТУЛОЧНО-ПАЛЬЦЕВЫЕ



MCT COUPLING

SIZE	Max bore (mm)		OD(mm) OD-outside dimension	HD(mm) hub diameter		L(mm) length	M(mm) M-gap	R-flange length		T-length through bore	Spares Number of pin (pcs)	Spares pin size
	Pin half	Bush half		Pin half	Bush half			Pin half	Bush half			
MC020	28	20	89	38	33	72	6	12	23	33	6	M8
MC030	38	32	127	64	51	88	6	12	26	41	4	M10
MC038	42	38	132	70	64	102	6	12	26	48	6	M10
MC042	48	42	146	82	70	118	6	12	33	56	8	M10
MC048	55	48	171	90	82	128	6	17	33	61	6	M12
MC058	65	58	193	105	97	142	6	17	33	68	8	M12
MC070	80	70	216	128	117	159	7	17	33	76	10	M20
MC075	85	75	254	142	127	183	7	30	56	88	8	M20
MC085	90	85	279	162	147	207	7	30	56	100	10	M20
MC0105	115	105	330	200	180	241	7	30	56	117	12	M20
MC0120	130	120	370	232	206	271	7	46	76	132	10	M24
MC0135	135	135	419	240	230	301	7	46	76	147	12	M24
MC0150	150	150	457	260	256	337	7	46	76	165	14	M24

SIZE	Bush no max bore		OD(mm) OD-outside dimension	HD(mm) hub diameter		L(mm) length	M(mm) M-gap	R-flange length		Spares Number of pin (pcs)	Spares pin size	T-length through bore	
	Pin half	Bush half		Pin half	Bush half			Pin half	Bush half			Pin half	Bush half
MCT042	1610-42	1212-32	146	82	78	69	6	12	26	8	M10	25	38
MCT048	2012-50	1615-42	171	90	82	76	6	17	33	6	M12	30	38
MCT058	2517-65	2012-50	193	106	-	83	6	17	33	8	M12	44	38
MCT070	3020-75	2517-65	216	128	117	102	7	17	33	10	M12	51	44
MCT085	3535-90	3030-75	279	162	148	172	7	30	56	10	M20	89	76
MCT105	4040-100	3535-90	330	200	180	198	7	30	56	12	M20	102	89
MCT120	4040-100	4040-100	370	232	206	211	7	46	76	10	M24	102	102
MCT135	4045-100	4545-110	419	240	230	235	7	46	76	12	M24	114	114
MCT150	5050125	5050125	457	260	256	261	7	46	76	10	M24	127	127



Type	D	D ₁	d ₁	L	C	n-M	Pin No.	Max torque N.m	Max speed r/min	weight (kg)
FCL90	L90	35.5	11	11	3	4-M8X50	1	6	4000	1.7
FCL100	100	40	11	35.5	3	4-M10X56	2	12	4000	2.5
FCL112	112	45	13	40	3	4-M10X56	2	18	4000	3.0
FCL125	125	50	13	45	3	4-M12X64	3	27	4000	4.0
FCL140	140	63	13	50	3	6-M12X64	3	55	4000	5.6
FCL160	160	80	15	56	3	8-M12X64	3	118	4000	7.8
FCL180	180	90	15	63	3	8-M12X64	3	160	3500	10.5
FCL200	200	100	21	71	4	8-M18X80	4	250	3200	16.2
FCL224	224	112	21	80	4	8-M18X80	4	400	2850	21.6
FCL250	250	125	25	90	4	8-M20X85	5	616	2550	31.8
FCL280	280	140	34	100	4	8-M20X85	5	980	2300	44.0
FCL315	315	160	41	112	4	10-M20X85	5	1568	2050	58.0
FCL355	355	180	60	125	5	8-M30X150	6	2460	1800	89.5
FCL400	400	200	60	125	5	10-M30X150	6	3920	1600	113
FCL450	450	224	65	140	5	12-M30X150	6	6180	1400	145
FCL560	560	250	85	160	5	14-M30X150	6	9800	1150	229
FCL630	630	280	95	180	5	18-M30X150	6	15680	1000	296



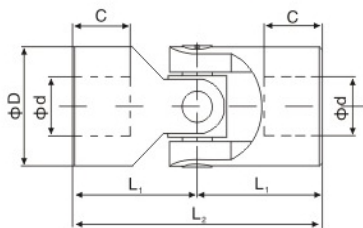
КАРДАНЫ



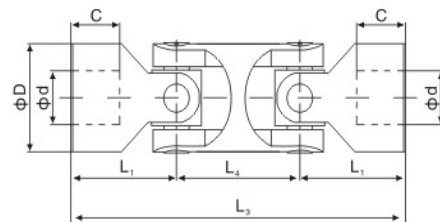
- Suitable for every application in the range of general engineering up to a maximum speed of 4000 min⁻¹
- Type G precision single joint Type GD precision double joint
- Maximum articulation angle 45° for each joint
- Available with finish bore H7—on request with keyway, hexagon bore or square bore
- Type G GD (plain bearing) Bearings designed n_{max}= 1000 min⁻¹
- Type GZ GDZ (needle bearing) Bearings designed n_{max}= 4000 min⁻¹

Precision Joints (Type G and GD)

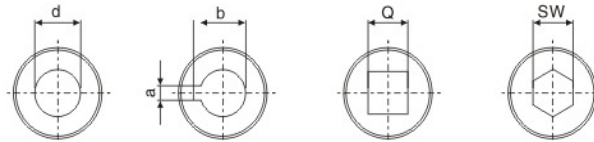
Precision single joint G



Precision double joint G



Finish bores:



Types and size				d [H7]	D	L ₂	L ₁	C	L ₄	L ₃	A [JS9]	b	Q	SW [H8]	Weight	
Size G	DIN description G	Size GD	DIN description GD												G [kg]	GD [kg]
01G	E6X16-G	01GD	D6X16-G	6	16	34	17	8	22	56	2	7.0	6	6	0.05	0.08
02G	E10X22-G	02GD	D10X22-G	10	22	48	24	12	26	74	3	11.4	10	10	0.10	0.15
03G	E12X25-G	03GD	D12X25-G	12	25	56	28	13	30	86	4	13.8	12	12	0.16	0.25
04G	E14X28-G	04GD	D14X28-G	14	28	60	30	13	36	96	5	16.3	13	13	0.20	0.40
05G	E16X32-G	05GD	D16X32-G	16	32	68	34	14	36	104	5	18.3	14	14	0.30	0.45
06G	E18X36-G	06GD	D18X36-G	18	36	74	37	17	40	114	6	20.8	18	18	0.45	0.70
07G	E20X42-G	07GD	D20X42-G	20	42	82	41	18	46	128	6	22.8	20	20	0.60	1.00
08G	E22X45-G	08GD	D22X45-G	22	45	95	17.5	22	50	145	6	24.8	22	22	0.95	1.55
09G	E25X50-G	09GD	D25X50-G	25	50	108	54	26	55	163	8	28.3	25	25	1.20	2.00
10G	E30X58-G	10GD	D30X58-G	30	58	122	61	29	68	190	8	33.3	30	30	1.85	2.90
11G	E35X70-G	11GD	D35X70-G	35	70	140	70	35	72	212	10	38.3	-	-	3.15	4.75
12G	E40X80-G	12GD	D40X80-G	40	80	160	80	40	85	245	12	43.3	-	-	4.60	7.20
13G	E50X95-G	13GD	D50X95-G	50	95	190	95	50	100	290	14	53.8	-	-	7.60	12.0