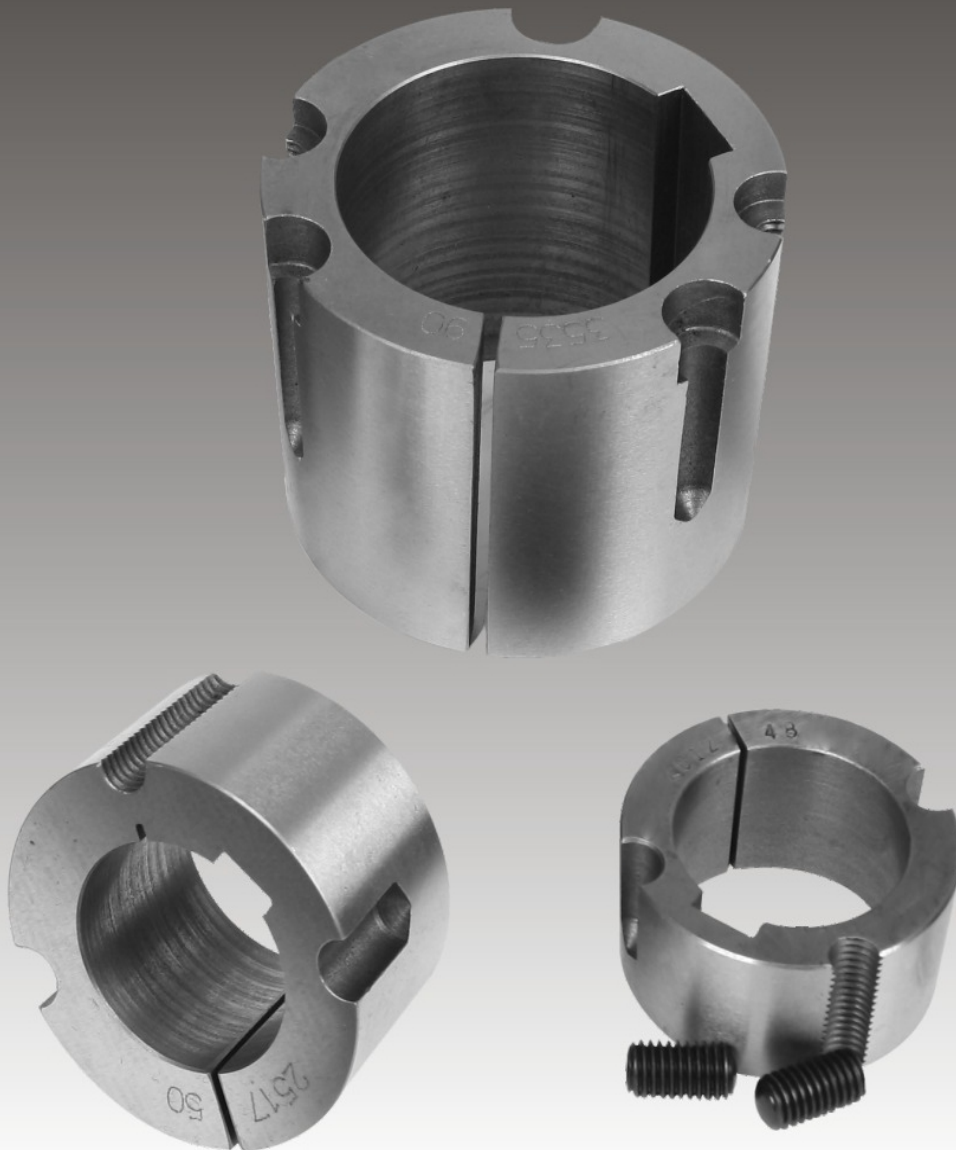




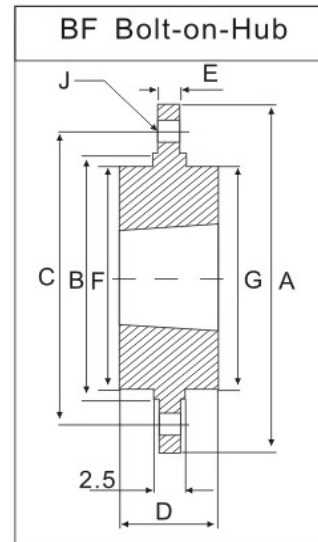
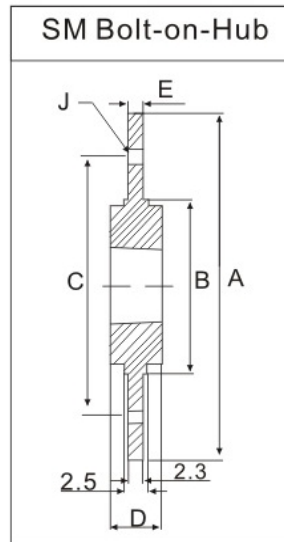
ЭЛЕМЕНТЫ КРЕПЛЕНИЯ

Bushing





ФЛАНЦЫ КРЕПЕЖНЫЕ



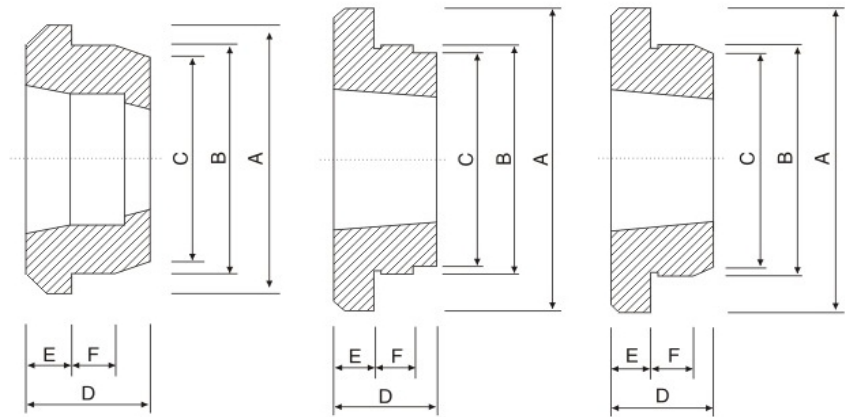
FLANGE

Hub Reference	Bush Number	A	B	C	D	E	J No.xDiam
SM 12	1210	180	90	135	26	6.5	6x7.5
SM 16-1	1610	200	110	150	26	7.5	6x7.5
SM 16-2	1615	200	110	150	38	7.5	6x7.5
SM 20	2012	270	140	190	32	8.5	6x9.5
SM 25	2517	340	170	240	45	9.5	6x11.5
SM 30-1	3020	430	220	300	51	13.5	8x13.5
SM 30-2	3020	485	250	340	51	13.5	8x13.5

Hub Reference	Bush Number	A	B	C	D	E	G	H	J No.xDiam
BF 12	1210	120	80	100	25	5.5	80	10	6x7.5
BF 16	1610	130	90	110	25	6.5	90	10	6x7.5
BF 20	2012	145	100	125	30	8.5	100	13	6x9.5
BF 25	2517	185	130	155	44	11.5	119	20	8x11.5
BF 30	3020	220	165	190	50	11.5	147	20	8x13.5



СТУПИЦЫ ПРИВАРНЫЕ



W

WH

WM

HUBS

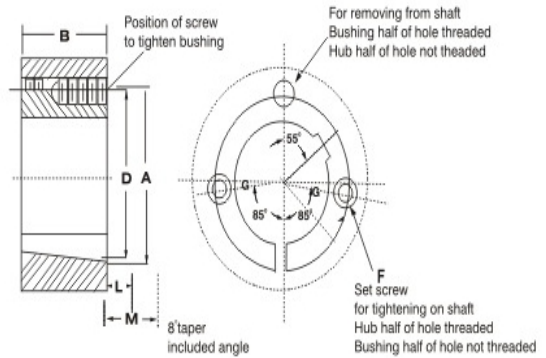
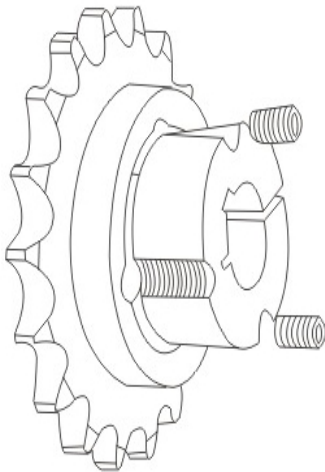
SIZE	Bushing	A	B	C	D	E	F
WH12	1210	70	65	64.5	25	9	10
WH16-1	1610	80	75	74.5	25	9	10
WH20	2012	95	90	89.5	32	12	12
WH25	2517	115	110	109.5	44	19	15
WH30-2	3020	145	140	139.5	50	20	15
WH35	3525	190	180	179.5	65	25	25
WH40	4040	200	190	189.5	101	32	30
WH45	4545	210	200	199.5	114	40	30
WH50	5050	230	220	219.5	127	40	35

SIZE	Bushing	A	B	C	D	E	F
W12	1215	73.03	63.50	62.17	38.10	15.88	9.53
W16	1615	82.55	73.03	72.24	38.10	15.88	9.53
W20	2017	101.60	88.90	88.11	44.45	19.05	14.45
W25	2517	127.00	111.13	110.34	44.45	19.05	12.70
W30	3030	149.86	133.35	132.56	76.20	25.40	19.05
W35	3535	184.15	158.75	157.96	88.90	31.75	25.40
W40	4040	225.43	196.85	196.06	101.60	31.75	31.75
W45	4545	254.00	222.25	221.46	114.30	38.10	38.10

SIZE	Bushing	A	B	C	D	E	F
WM12	1210	70.00	60.00	58.00	25.00	9.00	10.00
WM16-1	1610	83.00	70.00	68.00	25.00	9.00	10.00
WM16-2	1615	83.00	70.00	68.00	38.00	16.00	11.00
WM20	2012	95.00	90.00	88.00	32.00	12.00	12.00
WM25	2517	127.00	110.00	108.00	44.00	19.00	13.00
WM30-1	3020	152.00	130.00	125.00	50.00	20.00	15.00
WM30-2	3030	152.00	130.00	125.00	76.00	25.00	19.00
WM35	3535	184.00	155.00	151.00	89.00	32.00	25.00
WM40	4040	225.00	195.00	187.00	102.00	32.00	32.00
WM45	4545	254.00	220.00	213.00	114.00	38.00	38.00
WM50	5050	270.00	242.00	228.00	127.00	38.00	38.00



ВТУЛКИ КОНИЧЕСКИЕ TAPER BUSH / TAPER LOCK

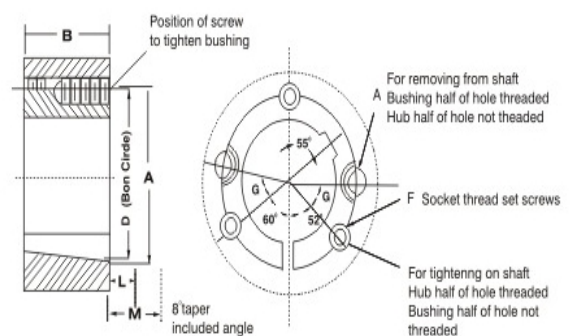


1008 – 3030 Taper Bushings

BUSH NO	SCREW TIGHTENING TORQUES(Nm)	SCREW	
		QUANTITY	SIZE
1008	5.6	2	1/4"
1108			BSW
1210	20	2	3/8"
1215			BSW
1310	20	2	3/8"
1315			BSW
1610	20	2	3/8"
1615			BSW
2012	31	2	7/16"
2517	48	2	1/2"
			BSW
3020	90	2	5/8"
3030			BSW
3535	112	3	1/2"
4040			BSW
4545	192	3	3/4"
5050			BSW
5050	271	3	7/8"
			BSW

BUSH NO	A	B	D	Set Screws
1008	1.386	7/8	1 21/64	1/4x1/2
1108	1.511	7/8	1 29/64	1/4x1/2
1210	1 7/8	1	1 3/4	3/8x5/8
1215	1 7/8	1 1/2	1 3/4	3/8x5/8
1310	2	1	1 7/8	3/8x5/8
1610	2 1/4	1	2 1/8	3/8x5/8
1615	2 1/4	1 1/2	2 1/8	3/8x5/8
2012	2 3/4	1 1/4	2 5/8	7/16x7/8
2517	3 3/8	1 3/4	3 1/4	1/2x1
2525	3 3/8	2 1/2	3 1/4	1/2x1
3020	4 1/4	2	4	5/8X1 1/4
3030	4 1/4	3	4	5/8X1 1/4

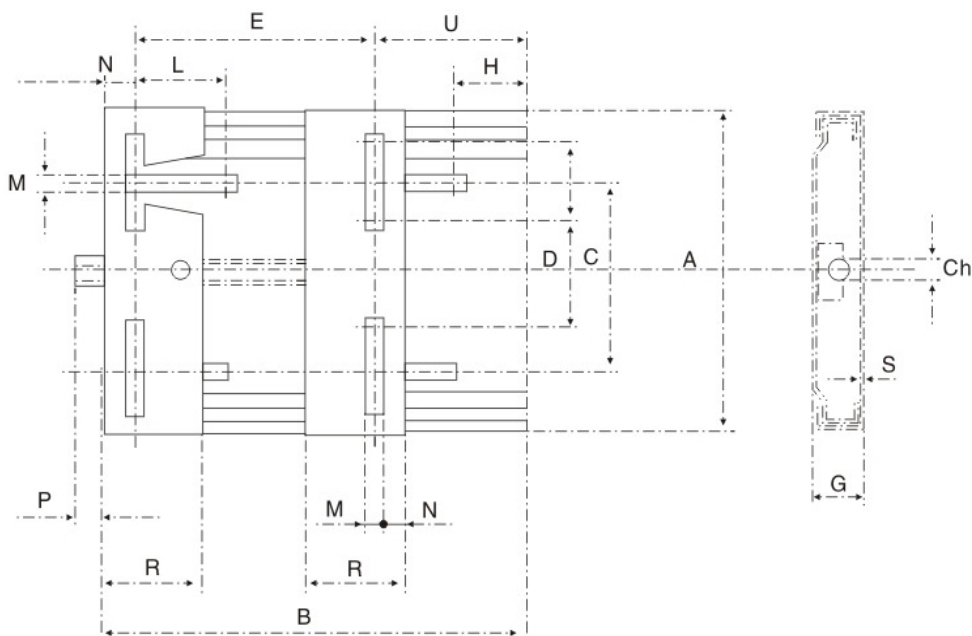
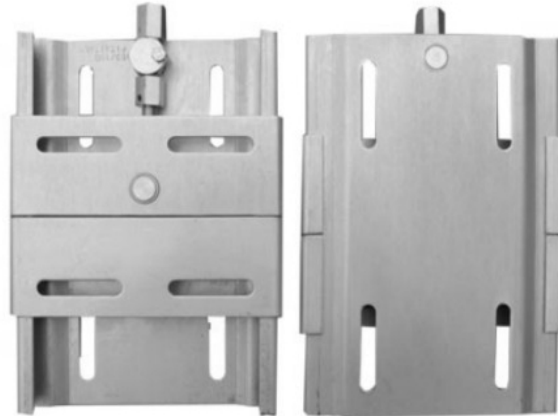
3535 – 5050 sizes



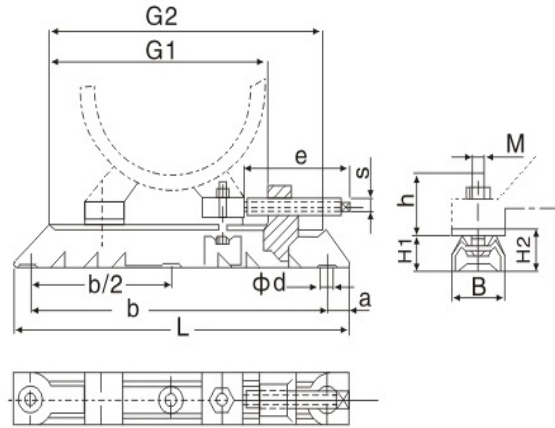
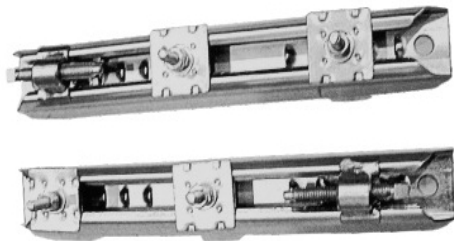


БАЗЫ КРЕПЛЕНИЯ ДЛЯ МОТОРОВ

Motor Base



CODE	A	B	C	D	E(min)	G	H	L	M	N	P	R	S	U	Ch
XD210	195	210	98	43	100	34	25	50	10.5	20	38	70	3	90	19
XD270	195	270	98	43	100	33	25	50	10.5	20	38	70	3	150	19
XD370	213	370	109	65	100	35	30	50	10.5	20	42	70	3	17.5	19
XD340	280	340	165	90	135	40	30	62	12.5	27	26	95	4	180	22
XD430	282	430	165	90	132	40	29	62	12.5	27	30	95	4	271	22
XD490	410	490	284	193	114	40	30	60	15	40	24	95	4	336	22



Type	Total Length L	Slide Length G1	Motor-type	MXH	eXs	G2	a	b	b/2	ϕd	B	H1	H2	G.W (kg)
312/6	312	240	63/71	M6X19	75X6	262	16	280	-	12	40	28	30	1.4
312/8	312	240	80/90	M8X27	75X6	262	16	280	-	12	40	28	30	1.5
375/6	375	305	63/71	M6X19	75X6	325	16	343	-	12	40	28	30	1.5
375/8	375	305	80/90	M8X27	75X6	325	16	343	-	12	40	28	30	1.6
375/10	375	305	100/112	M10X32	75X6	325	16	343	-	12	40	28	30	1.6
395/8	395	302	80/90	M8X28	97X8	325	20	355	-	12	50	40	43	3.4
395/10	395	302	100/112	M10X35	97X8	325	20	355	-	12	50	40	43	3.4
495/8	495	405	80/90	M8X29	97X8	325	20	455	-	12	50	40	43	4
495/10	495	405	100/112/132	M10X35	97X8	325	20	455	-	12	50	40	43	4
495/12	495	405	160	M12X49	97X8	325	20	455	-	12	50	40	43	4
530/10	530	413	132	M10X37	119X9	442	25	480	-	14	60	50	54	6.4
530/12	530	413	160	M12X49	119X9	442	25	480	-	14	60	50	54	6.4
630/10	630	515	132	M10X37	119X9	542	25	580	-	14	60	50	54	8.2
630/12	630	515	160/180	M12X45	119X9	542	25	580	-	14	60	50	54	8.2
686/12	686	538	160/180	M12X43	154X12	575	28	630	315	18	75	60	64	12.8
686/16	686	538	200/225	M16X62	154C12	575	28	630	315	18	75	60	64	12.8
864/16	864	700	200/225	M16X60	300X16	810	32	800	400	24	90	75	-	16.6
864/20	864	700	250/280	M20X68	300X16	810	32	800	400	24	90	75	-	16.6
1072/20	1072	865	250/280	M20X77	360X19	995	36	1000	500	30	112	100	-	33.4
1072/24	1072	865	315	M24X88	360X19	995	36	1000	500	30	112	100	-	33.5
1330/24	1330	1065	315/355	M24X95	430X21	1215	40	1250	625	30	130	125	-	33.6